

What's in the box

1. Coiled Cable



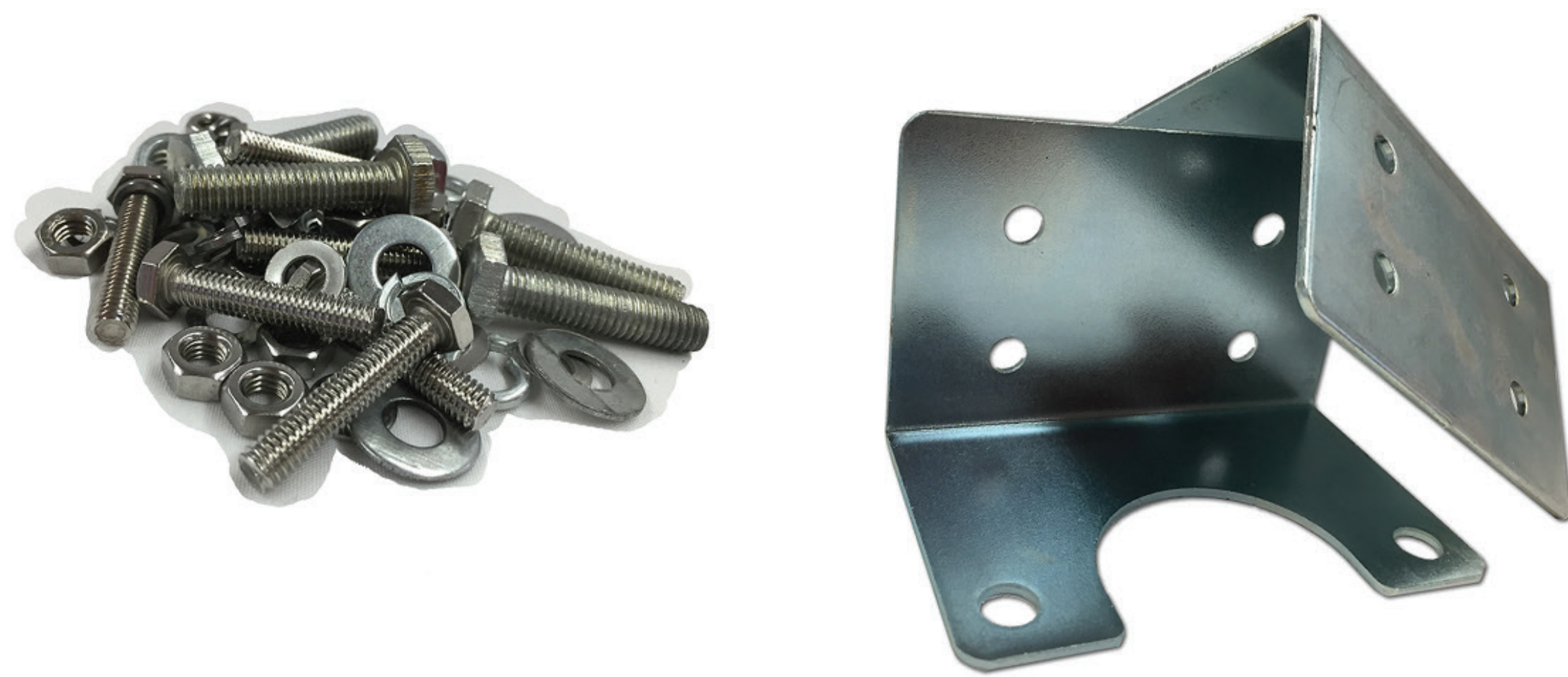
2. Coiled Cable Harness



3. Four Pin Connectors



4. Brackets, Bolts, and Nuts



Note: The Bracket, Bolts, and Nuts are a paid upgrade that is only available for our commercial systems.



Premium Cables 25ft-100ft are also included, depending on the lengths and quantities you picked when purchasing

Where to start?

Stage 1 - Setting up the monitor side:

1. Remove the monitor, harness, and all its cables from the box
2. Connect the monitor to the dash mount and adjust (to expose the groove, you might need to remove the outer shell)
3. Connect the harness to the corresponding socket in the monitor.
4. Thread the RCA Cable from the REAR of the truck to the front of the vehicle, (Spool any extra cable under your dash)
TIP: if you purchased the power upgrade for your cable, make sure that the FEMALE connector ends up by the main power source.
5. At the rear of your truck connect the Premium cable to the **Coiled Cable Harness** (see in previous page) using the **Four Pin connector**
6. Under your dash, Plug the RCA Cable into the corresponding RCA socket of the monitor harness
7. On the monitor harness, connect the **RED** (+) and **BLACK** (-) bare wires to your 12-volt power source
Note: To power your system from 1 source, plug the red DC barrel cable into each cameras cable.
8. Turn on the monitor and you should see either the rear view camera or a blue screen saying, "No Signal".
(Don't worry about the "No Signal" it will disappear as soon as you connect the camera to power or if you toggle inputs)

Stage 2- Setting up the camera side:

1. Remove the backup camera from the box with all its cables. (We always recommend testing the camera before mounting it)
2. Thread the RCA Cable from the REAR of the th wheel to the front of the th wheel, (Spool any extra cable by the goose neck)
TIP: if you purchased the power upgrade for your cable, make sure that the FEMALE connector ends up by the main power source.
3. At the rear of your 5th wheel connect the Premium cable to the **Coiled Cable Harness** (see in previous page) using the **Four Pin connector**
4. After mounting the camera, connect the cameras to the RCA and DC plug to your premium cable
TIP: To keep camera active while driving, connect to a constant power source such as a running light, otherwise use the reverse light.

Stage 4- Connecting the 5th wheel to your Truck

1. Take the **Coiled Cable** and connect between the 5th wheel and truck, make the sure metal "flip-up cap" of the **Coiled Cable Harness** grabs the "horn" of the **Coiled Cable** so it stays locked while driving
TIP: if you're using a split screen monitor, repeat stage 1 and 2 for each camera

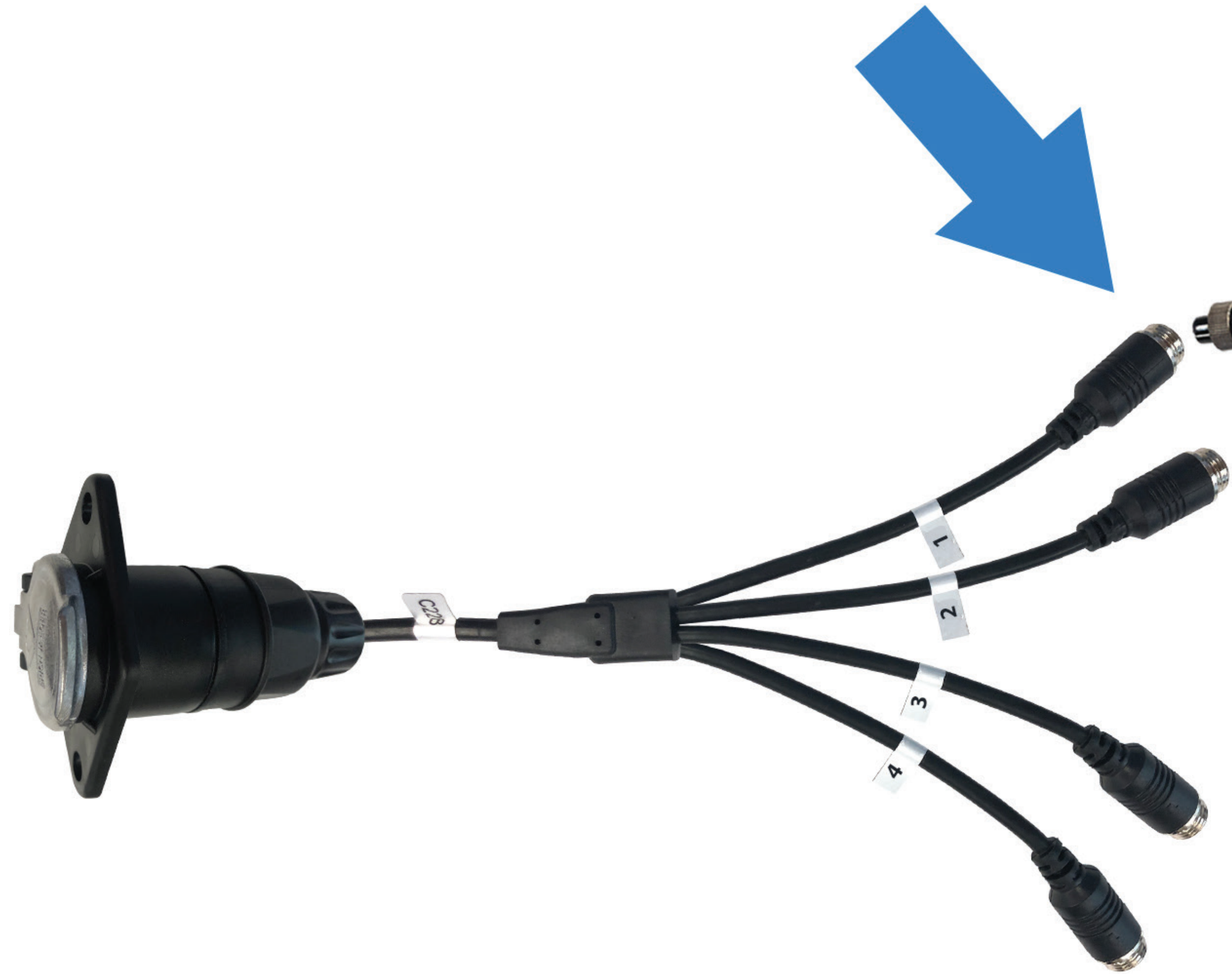
Note: If you dont see the image on your screen, verify that you are on the correct channel input

Setting up the Rear View Monitor side

TIP: If you mistakenly threaded the male or female end to the wrong side of your vehicle, we sell a large assortment of couplers that will save you the frustration of rethreading your entire vehicle. They are usually available at your local hardware store as well

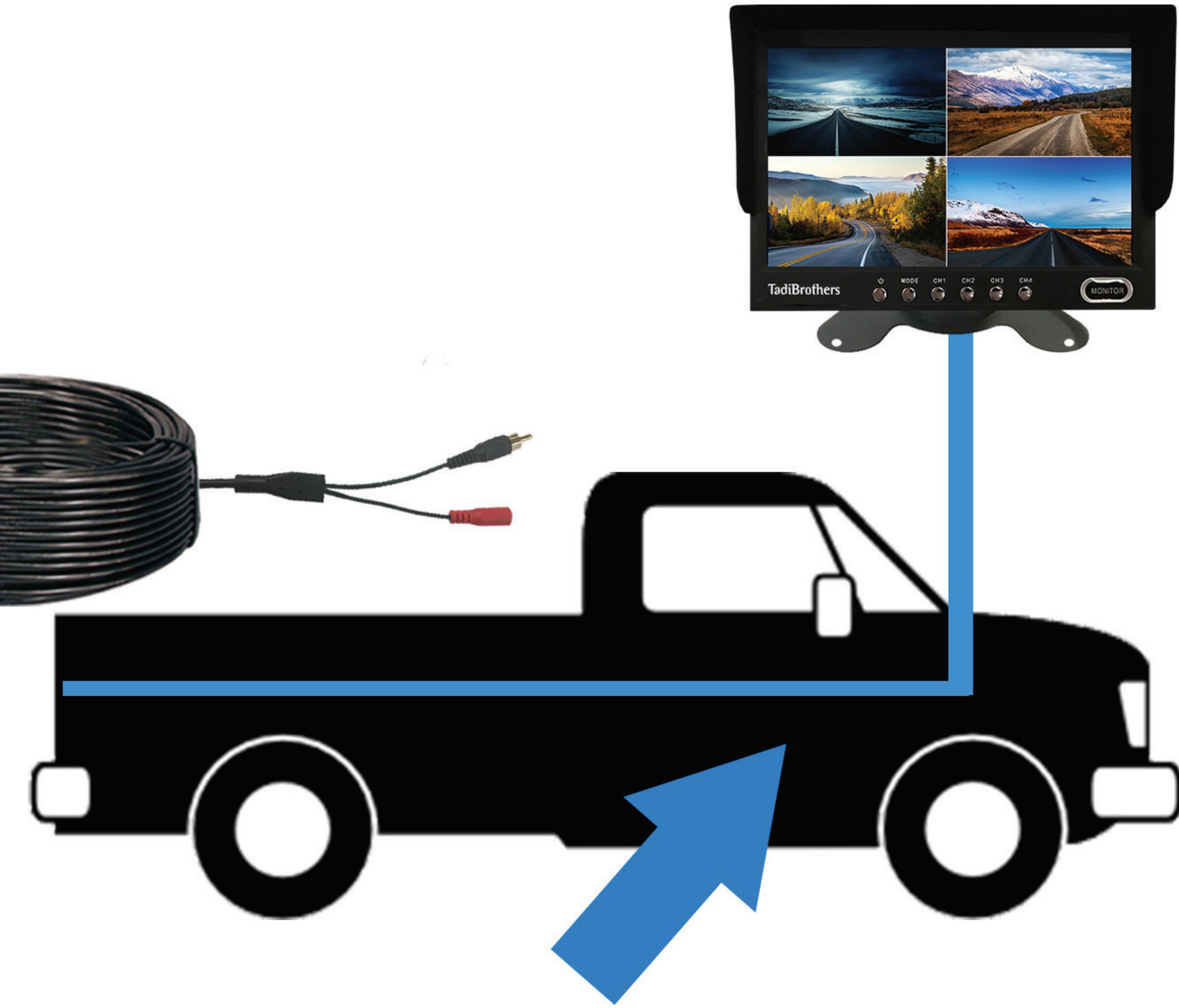


3. Connect the 4 Pin Adapter to the to the Coiled Cable Harness



2. Connect the 4 Pin adapter to the RCA Cable

1. Thread the cable through the Vehicle (Female DC plug is on the monitor side)



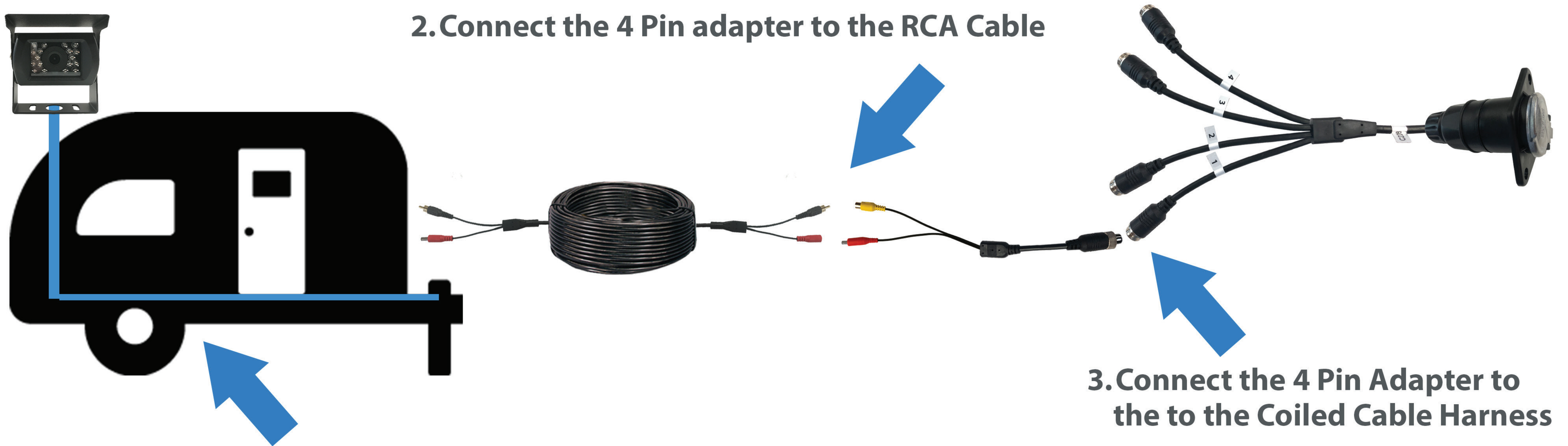
Note: if you need to connect the pig tail cable to a premium cable and it has a female socket, feel free to cut off the head and expose the bare wires, (it will NOT affect your warranty or the ability to return)

Repeat this process for each camera you have

This process applies to any monitor you purchased from TadiBrothers



Setting up the Rear View Camera side



1. Thread the cable through the 5th wheel
(Male DC plug is on the camera side)

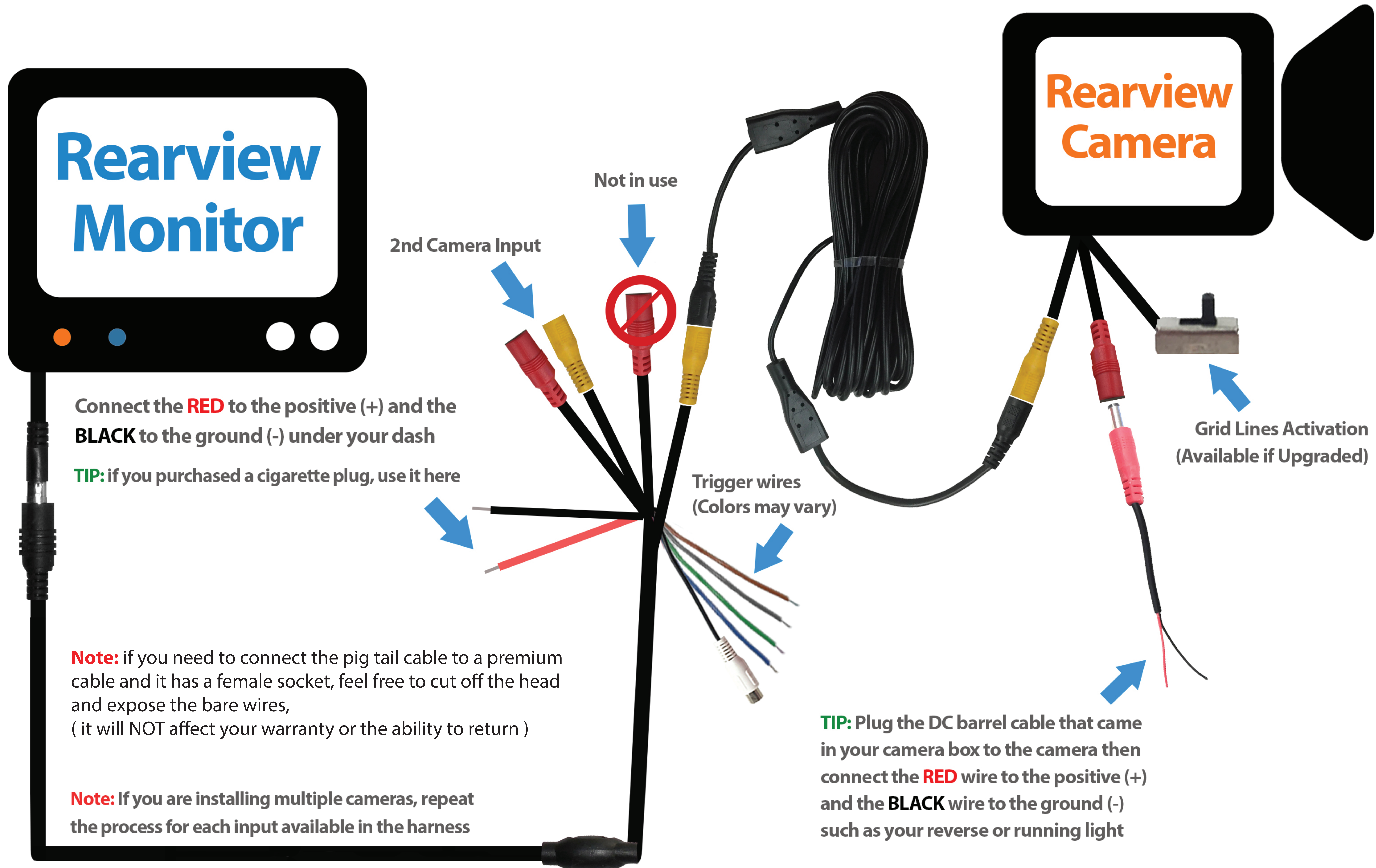
Repeat this process for each camera you have

This process applies to any camera you purchased from TadiBrothers



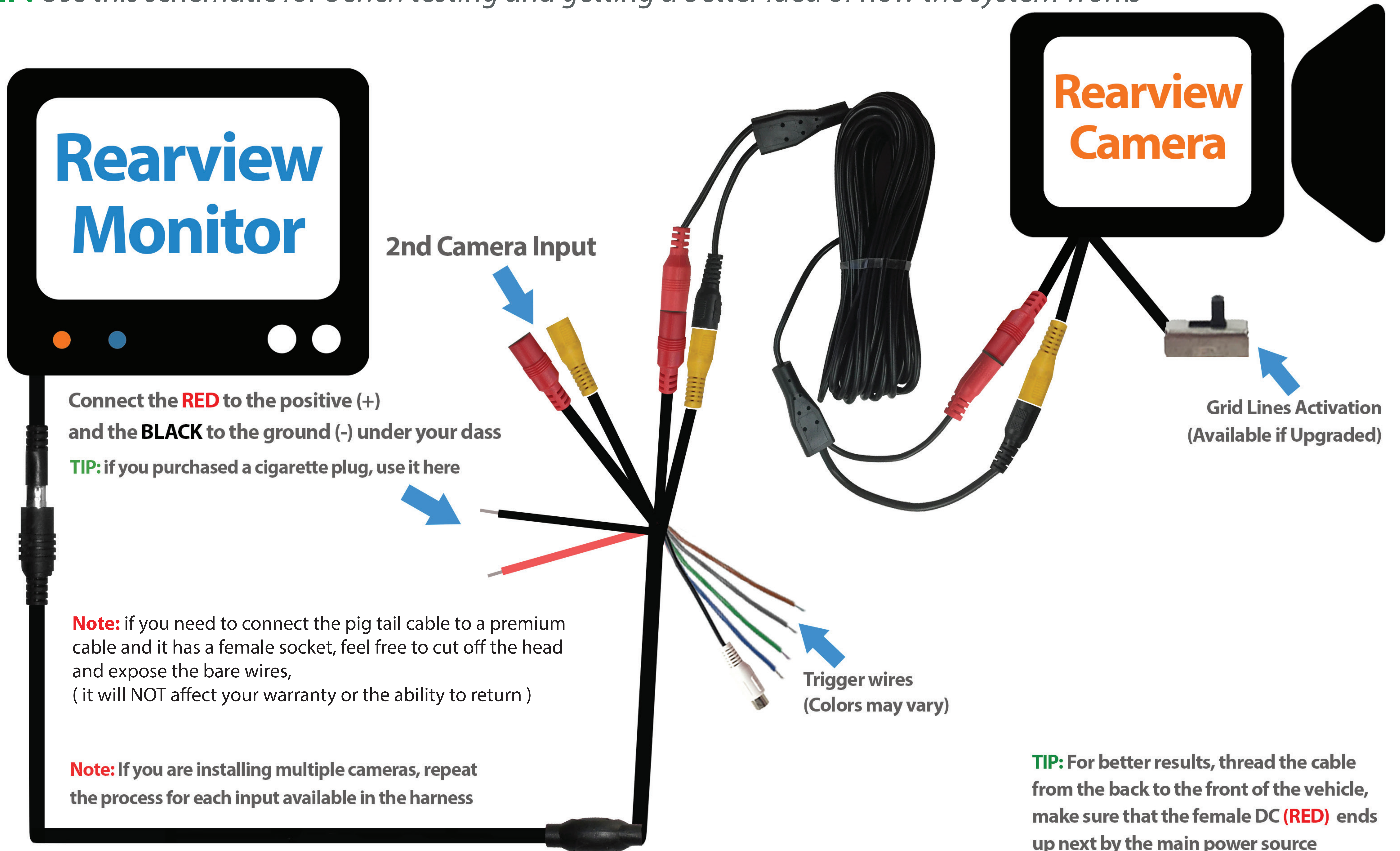
Standard Wired Setup

TIP: Use this schematic for bench testing and getting a better idea of how the system works



Wired Setup with In-line Power Cable

TIP: Use this schematic for bench testing and getting a better idea of how the system works



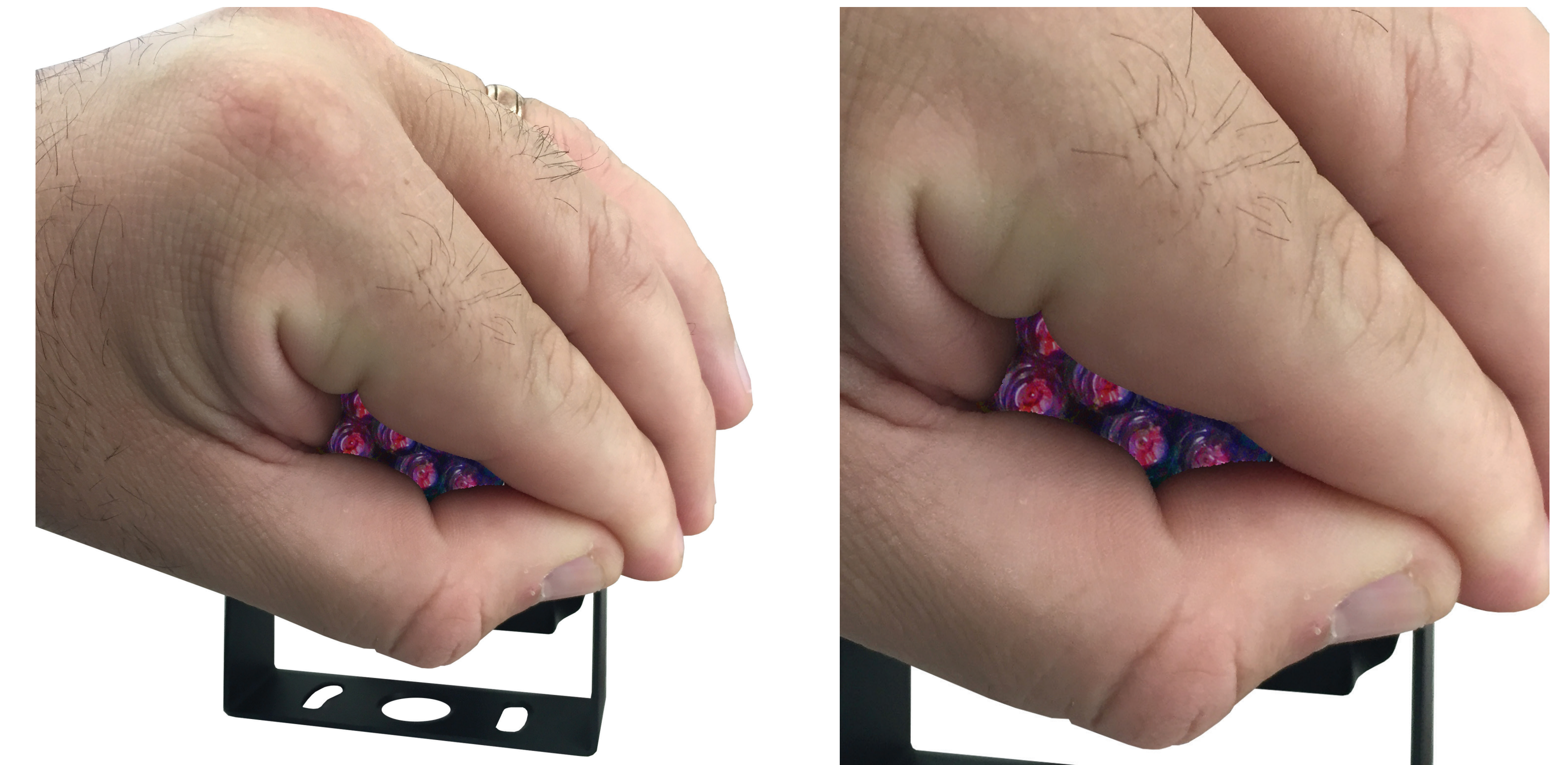
Tips that might help



If your system came with a monitor 7-inches and above and you can't see the mounting groove for your bracket, you might need to remove the dash "insert shell".

To remove the shell, press down on the two buttons/tabs on the sides of the monitor, then press down on the little red tab on by the bottom corner of the screen. Then remove the monitor from the shell.

To test that your camera is getting power or to see if your night vision is active, place your hand over the camera and look for the LED lights that surround the lens to turn red. This process will work with ANY of our back-up camera that have the LED lights around the lens (i.e. license camera, RV camera, Bumper camera etc....)



NOTE: LED Lights may be very faint (they are meant to soak in light)

4 Channel Remote



Power on/off

Enter the menu to change the monitor settings

Navigate through the settings

Change camera channels 1-4

2 Channel Remote



Power on/off

Switch between Video 1 and Video 2

Navigate through the settings

Change screen resolution

Mounting Examples of Cameras



Mounting Examples of Monitors



Mounting Ideas:

Give your monitor an overhead view by flipping the dash mount that came with your monitor.



You can also get the overhead view with our **suction cup** by mounting it up high.



Extra Mounting Advice

Thread the cable from the front to the back, this way it's easier to spool up any cable you have left over.

If you upgraded to our premium cable, we suggest threading it in wat that would leave the FEMALE DC plug by the 12-Volt. This way you can power it from one source.

If you have a 5th wheel + truck do the same thing; your premium cable should end at the front (Hitch) of the 5th wheel where you will install the coiled cable harness

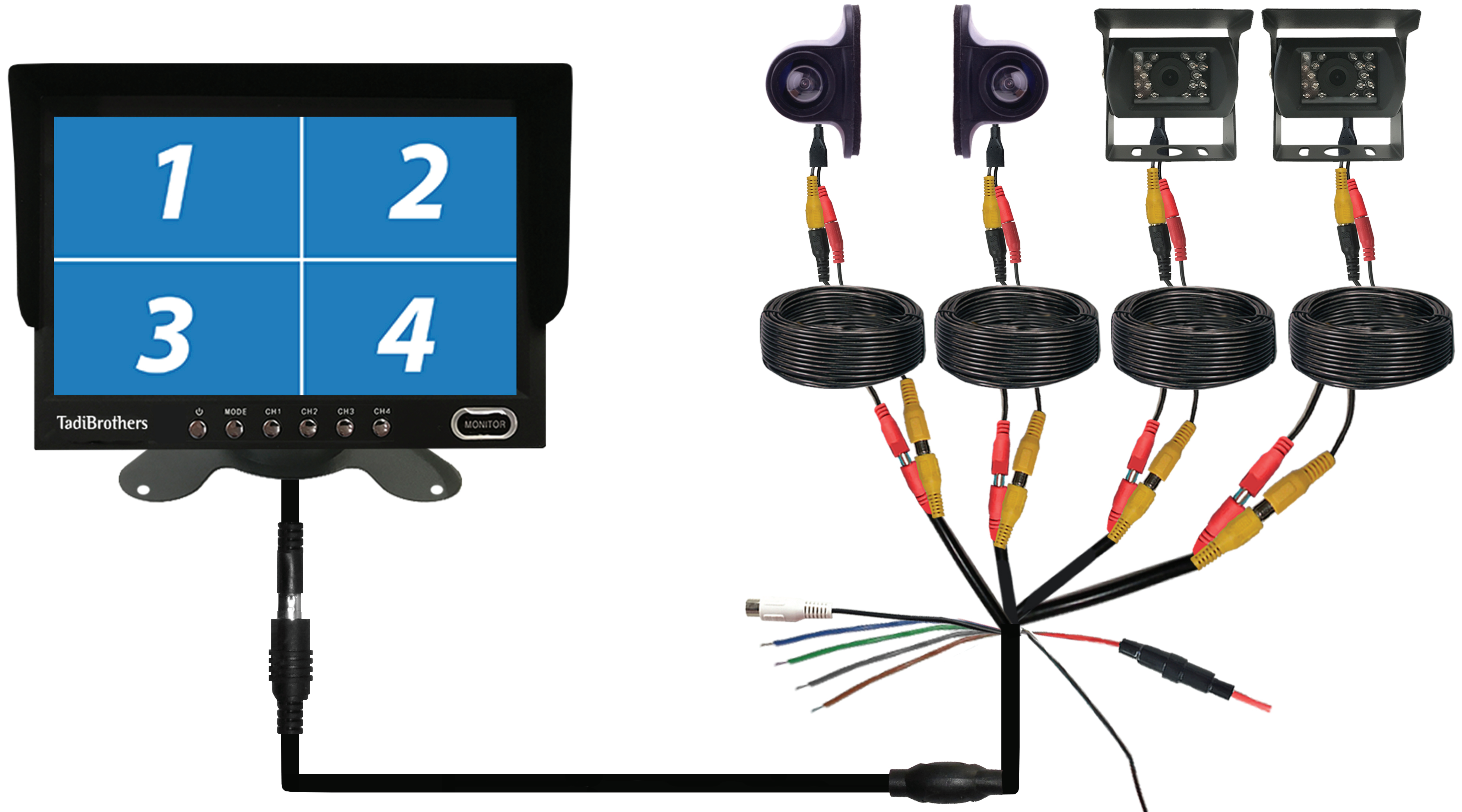


Cameras Connected to the Cable



Example of a Split Screen Setup

TIP: Use this schematic for bench testing and getting a better idea of how the system works



Note: if you need to connect the pig tail cable to a premium cable and it has a female socket, feel free to cut off the head and expose the bare wires, (it will NOT affect your warranty or the ability to return)

Troubleshooting Guide Page 1

These are common issues and questions we have compiled, please read through them and see if they answer any of your questions.

Caution: To avoid burning out your back up camera system you **MUST** connect the camera to the transmitter **BEFORE** connecting the transmitter to the power of the vehicle power/Battery.

1. Why don't the LED lights on the camera turn on?

A. The led bulbs you see on your camera are (infrared) they are meant to soak in the light. When that camera is powered you should not see any lights

2. Why do I see "NO SIGNAL" on my monitor?

A. This means that the monitor is not getting a picture from the camera, make sure the camera is connected to the power and if you are using a wireless system double check that the adaptors are both getting power.

B. If this still doesn't work try connecting the camera directly to the monitor so that you can see if the problem is with the wireless adaptors, the cables between the monitor and the camera, or the camera itself

3. Why is my monitor showing white?

A. This is usually a result of using a bad power connector, make sure ALL the cables are insulated correctly and don't use any "makeshift" cigarette adaptors. Those may use more than 14 volts and will cause the system to go white or even burn it out.

4. How can I get an original cigarette adaptor?

A. You can purchase it at tadibrothers.com (SKU89171) or take the cable to your local Radio Shack and they should have what you need.

5. Why does my screen look "scratched up"?

A. Peel off the film over the screen, even if it looks like it's not there, keep trying, we don't sell used items and its ALWAYS the film over the screen (This only applies to MONITORS not MIRRORS)

6. Where can I have it installed?

A. You can install your system anywhere that installs car radios; it should not take more than 1-2 hours of work. Some of our customers have had success with Best Buy.

7. How can I connect my system so that it is always on?

A. When installing the camera plug it into a constant power source (a power source that is always on, when the vehicle is on) then you will always be able to look behind.

8. How do I connect my system so that it turns on when I go in reverse?

A. When installing the camera, connect it to a reverse light power source this way the camera will turn on only when you go in reverse, and the monitor will show an image only when it is getting a picture from the camera. (Note: The RED wire connects to the positive (+) of the reverse light & the BLACK wire connects to the ground (-) of the reverse light)

Troubleshooting Guide Page 2

9. What is the pass code for my Bluetooth monitor?

We have 3 codes that you should try:

- A. 0000
- B. 1234
- C. 8888

10. My system is supposed to be wireless, why are there so many wires in a wireless system?

A. The reason your system is called wireless is because there is NO WIRE between the monitor and the camera, both systems still need power/ground and a wireless module

11. Why are there NO holes or groves for my monitors dash mount stand?

A. Remove the plastic shell that is over your monitor, it might look like it's part of the monitor but it can pop off, when you pull on it you can see that it can be taken off

12. My 2.5-4.3" Monitor doesn't show anything but a black screen?

- A. Your camera isn't getting power
- B. The RCA cable is not plugged in to both sides correctly
- C. One or both of you wireless adaptors are not power up (check connections)

13. Why is there a Blue or Green wire, what do I do with it?

A. The Blue or Green Cable is an optional trigger wire for the monitor, if connected to reverse fuse (usually under your dash) the monitor will activate when you go in reverse

14. Do the transmitter boxes need to be protected from the weather?

A. No, they are weather proof, but we do recommend setting them up so that they won't dangle while you drive, this way you get a clearer image and they won't get damaged from bouncing around.

15. Why does my wireless system lose reception when I drive or when I turn on the vehicle?

- A. Try connecting the wireless adaptors to a different power source, there have been rare cases that power source caused interference
- B. Try extending the transmitter with an RCA cable so that its closer to the receiver (some areas have more interference than other so it needs that extra boost)

16. My wireless system gets lines or "no signal" in the display only when I start driving?

A. Make sure the wireless adaptors are fastened tightly to the vehicle and not bouncing around.
(Tip - use Velcro to fasten them to the vehicle, available at Tadibrothers.com or most stores)

17. How do I remove the grid lines from my camera?

A. To remove the gridlines, twist together the two wires that come out of the camera, only then, connect the power plug into the 12 volt of the vehicle or battery, then the lines will disappear.

18. How can I return my product?

A. All items must get an RMA from our service department, please call them for the RMA at 866-966-5550 X 2

