



Instruction manual for your wired system

Bench test all components before permanently mounting

Where to start?

Stage 1 - Setting up the monitor side:

Note: This setup guide applies to **Mirror** and **Visor** Mount Monitors

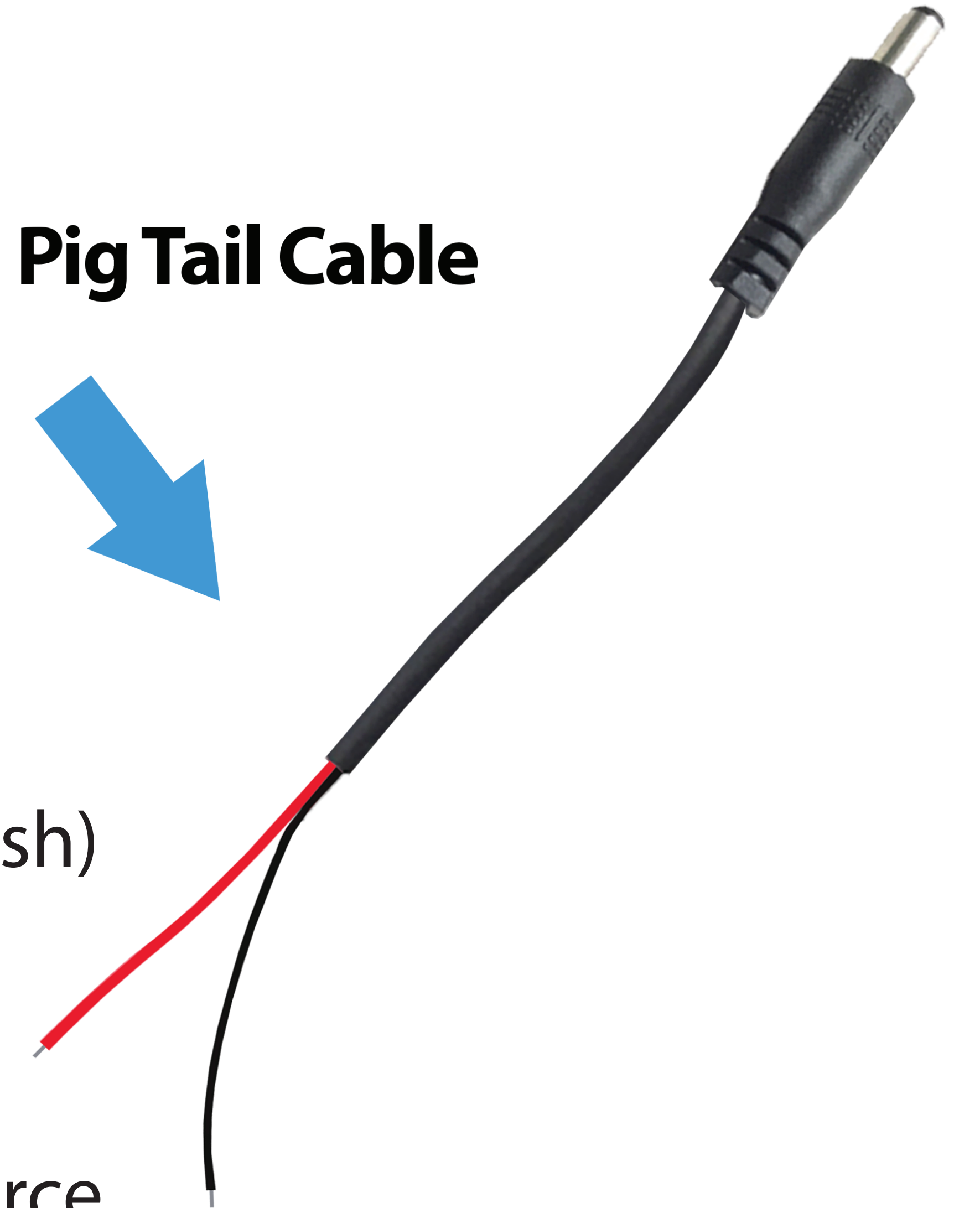
1. Remove the mirror, harness, and all its cables from the box
2. Connect the harness to the mirror and clip it over your existing mirror then thread the cable through the lining of the wind shield to your 12-volt power source
3. Plug the RCA Cable into the corresponding RCA socket of the monitor harness
4. Thread the RCA Cable from the front to the rear of the vehicle, (Spool any extra cable under your dash)

TIP: if you purchased the power upgrade for your cable, make sure that the **FEMALE** connector ends up by the main power source.

5. From the monitor harness, connect the **RED** (+) and **BLACK** (-) bare wires to your 12-volt power source

Note: To power your system from 1 source, join the bare wires of the “pig tail” cables with the bare wires coming off the monitor harness, then plug it into 12 volts, the male barrel connector plugs into the camera's cable

This is the **Pig Tail Cable**



Stage 2- Setting up the camera side:

1. Remove the backup camera from the box with all its cables.
(We always recommend testing the camera before mounting it)
2. Connect the camera to the RCA Cable
3. Connect the bare wires of the pig tail cable to your 12-volt power source then plug it in to your camera

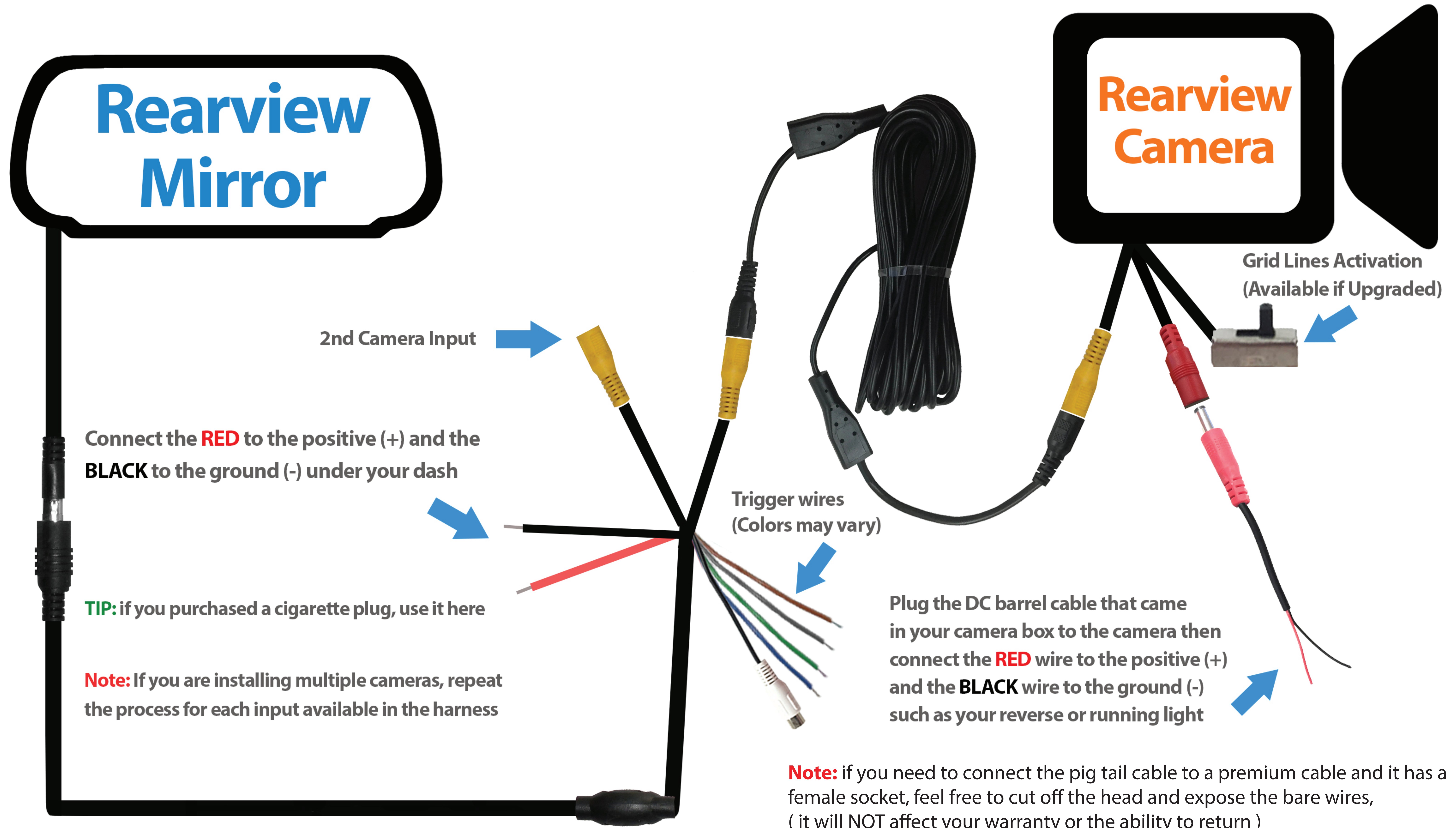
TIP: To keep camera active while you're driving, connect it to a constant power source such as a running light, otherwise use the reverse light.

4. Mount the camera in its designated location (Roof, License plate, Bumper, etc...) and make sure it is getting power

TIP: if you're using a split screen monitor, repeat stage 1 and 2 for each camera

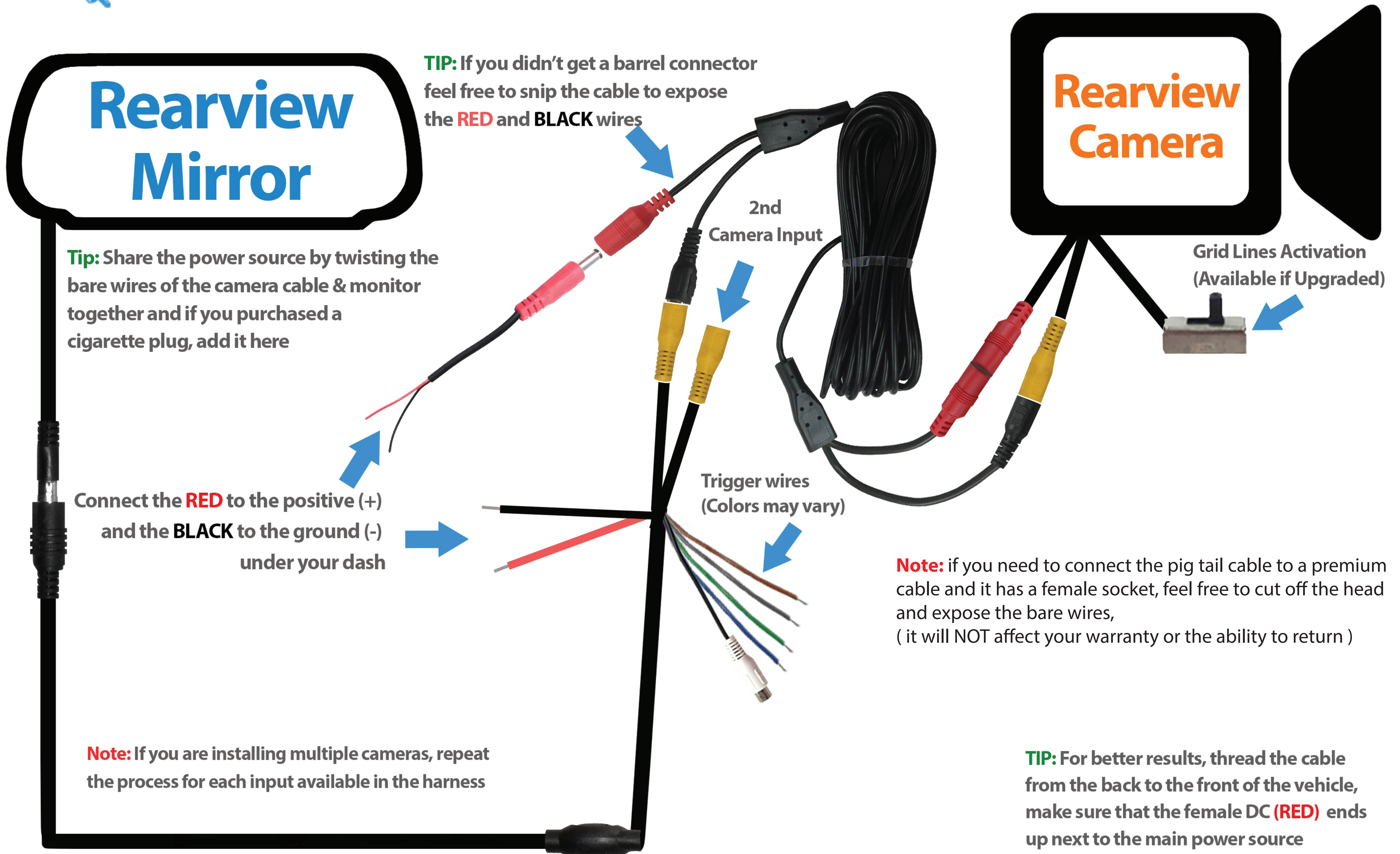
Note: If you get a “No signal” alert on your screen, it usually means you're either on the wrong input (V1/V2) or isn't getting power.

Standard Wired Setup



Wired Setup with In-line Power Cable

Bench test all components before permanently mounting



Rearview Mirror

Tip: Share the power source by twisting the bare wires of the camera cable & monitor together and if you purchased a cigarette plug, add it here

Connect the **RED** to the positive (+) and the **BLACK** to the ground (-) under your dash

Note: If you are installing multiple cameras, repeat the process for each input available in the harness

TIP: If you didn't get a barrel connector feel free to snip the cable to expose the **RED** and **BLACK** wires

2nd Camera Input

Trigger wires (Colors may vary)

Rearview Camera

Grid Lines Activation (Available if Upgraded)

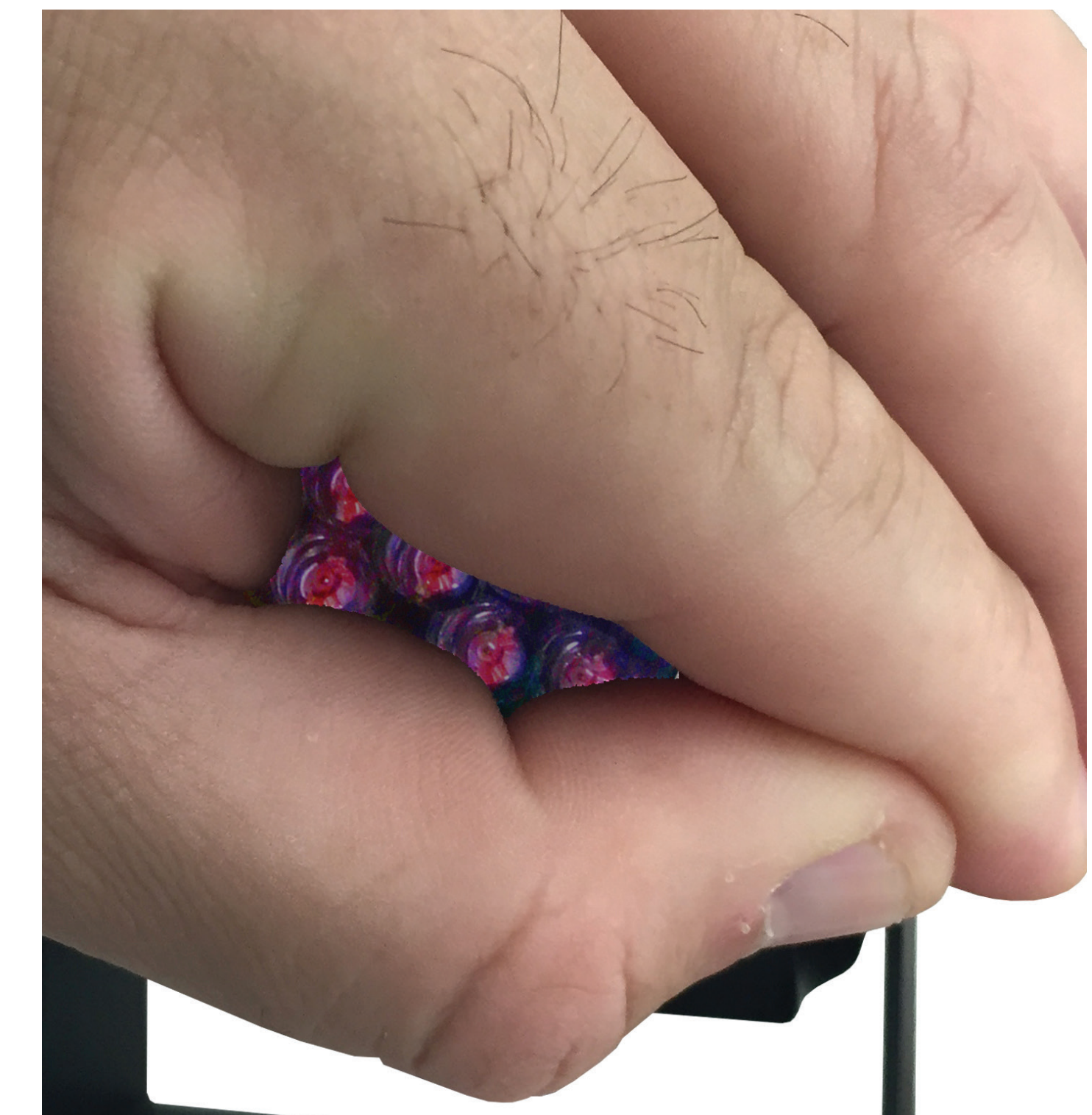
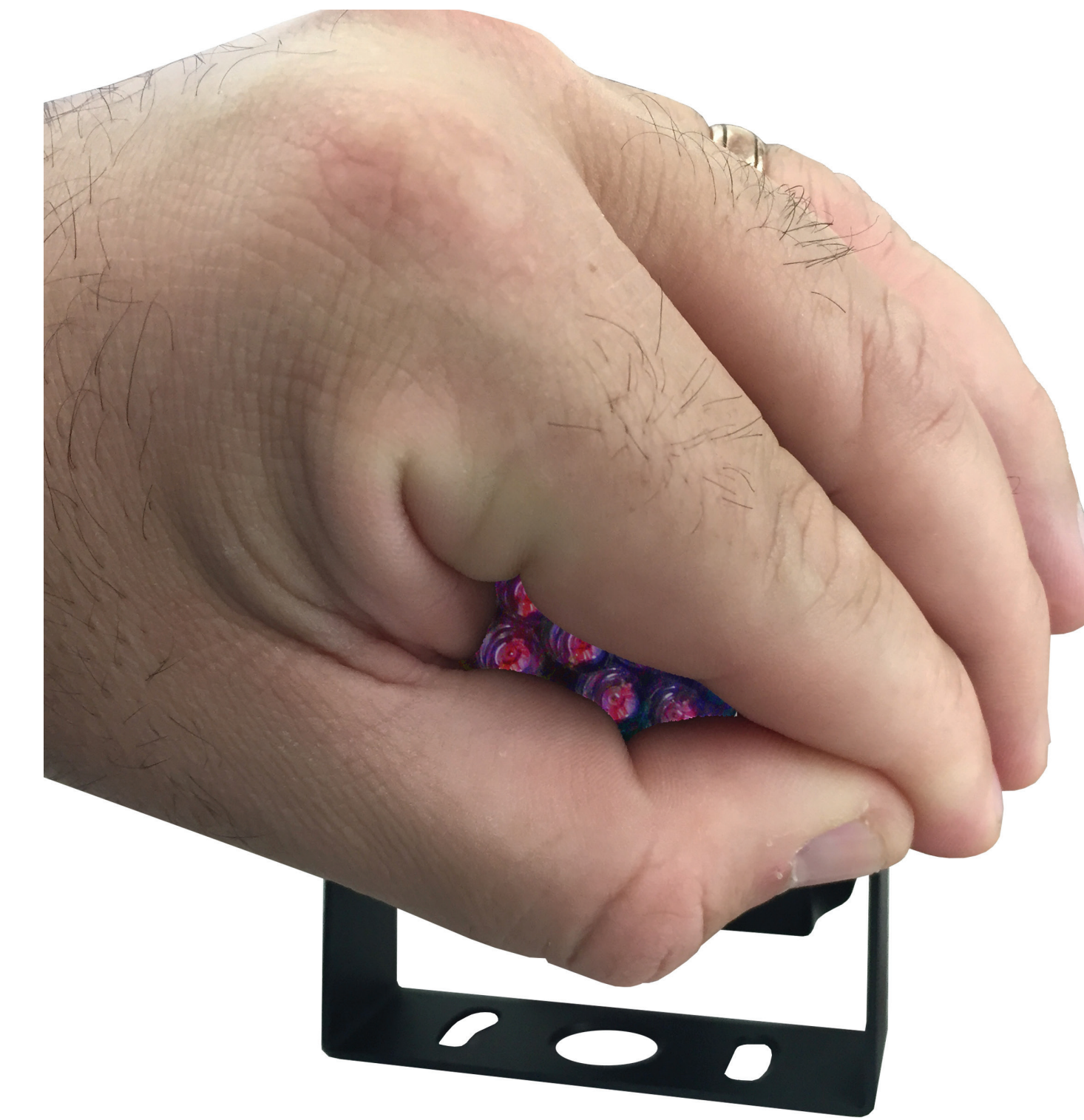
Note: if you need to connect the pig tail cable to a premium cable and it has a female socket, feel free to cut off the head and expose the bare wires, (it will NOT affect your warranty or the ability to return)

TIP: For better results, thread the cable from the back to the front of the vehicle, make sure that the female DC (**RED**) ends up next to the main power source

Tips that might help

To test that your camera is getting power or to see if your night vision is active, place your hand over the camera and look for the LED lights that surround the lens to turn red. This process will work with ANY of our backup camera that have the LED lights around the lens (i.e. license camera, RV camera, Bumper camera etc....)

NOTE: LED Lights may be very faint (they are meant to soak in light)



4 Channel Remote



- Power on/off
- Enter the menu to change the monitor settings
- Navigate through the settings
- Change camera channels 1-4

2 Channel Remote

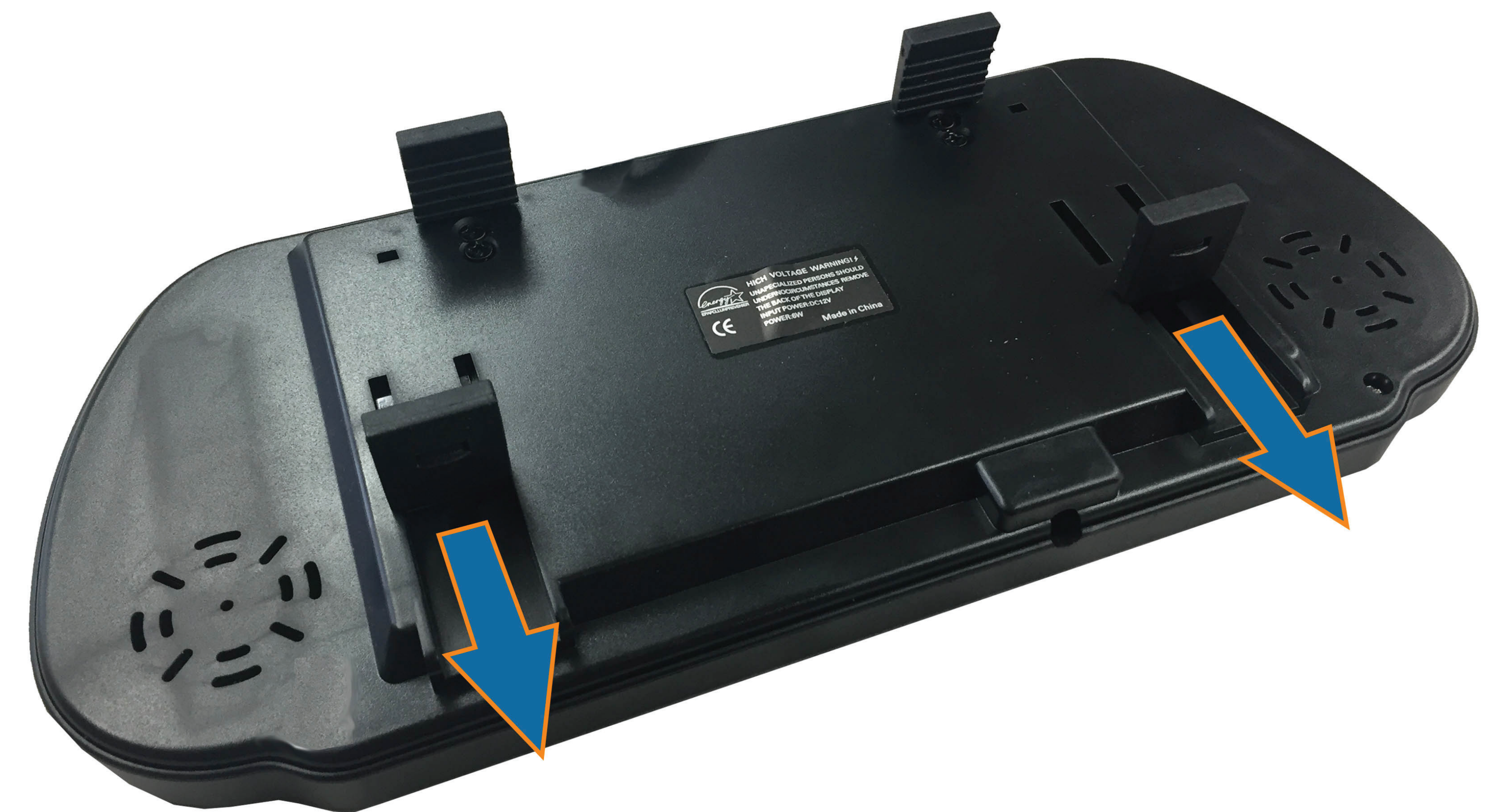


- Power on/off
- Switch between Video 1 and Video 2
- Navigate through the settings
- Change screen resolution

Mounting Examples of Cameras



Mounting Examples of the Clip-On Mirror



Extra Mounting Advice

Thread the cable from the front to the back, this way its easier to spool up any cable you have left over. If you upgraded to our premium cable we suggest threading it in wat that would leave the FEMALE DC plug by the 12-Volt. This way you can power it from one source.



Plug the bare wires side of the **pig tail** into your 12-volt power source, and the male barrel plug to the camera.

If you plan to power your entire system from 1 source (i.e. from the front of the vehicle) twist together the bare wires of the pigtail and the monitor and then connect them to your power source.

If you purchased the cigarette adapter, use that now

This is the **Pig Tail Cable**



Cameras Connected to the Cable



Split Screen System Set Up



To power the cameras from 1 source, connect each pig tail to the same 12 volts

Note: if you need to connect the pig tail cable to a premium cable and it has a female socket, feel free to cut off the head and expose the bare wires, (it will NOT affect your warranty or the ability to return)

Troubleshooting Guide Page 1

These are common issues and questions we have compiled, please read through them and see if they answer any of your questions.

Caution: To avoid burning out your back up camera system you **MUST** connect the camera to the transmitter **BEFORE** connecting the transmitter to the power of the vehicle power/Battery.

1. Why don't the LED lights on the camera turn on?

A. The led bulbs you see on your camera are (infrared) they are meant to soak in the light. When that camera is powered you should not see any lights

2. Why do I see "NO SIGNAL" on my monitor?

A. This means that the monitor is not getting a picture from the camera, make sure the camera is connected to the power and if you are using a wireless system double check that the adaptors are both getting power.

B. If this still doesn't work try connecting the camera directly to the monitor so that you can see if the problem is with the wireless adaptors, the cables between the monitor and the camera, or the camera itself

3. Why is my monitor showing white?

A. This is usually a result of using a bad power connector, make sure ALL the cables are insulated correctly and don't use any "makeshift" cigarette adaptors. Those may use more than 14 volts and will cause the system to go white or even burn it out.

4. How can I get an original cigarette adaptor?

A. You can purchase it at tadibrothers.com (SKU89171) or take the cable to your local Radio Shack and they should have what you need.

5. Why does my screen look "scratched up"?

A. Peel off the film over the screen, even if it looks like it's not there, keep trying, we don't sell used items and its ALWAYS the film over the screen (This only applies to MONITORS not MIRRORS)

6. Where can I have it installed?

A. You can install your system anywhere that installs car radios; it should not take more than 1-2 hours of work. Some of our customers have had success with Best Buy.

7. How can I connect my system so that it is always on?

A. When installing the camera plug it into a constant power source (a power source that is always on, when the vehicle is on) then you will always be able to look behind.

8. How do I connect my system so that it turns on when I go in reverse?

A. When installing the camera, connect it to a reverse light power source this way the camera will turn on only when you go in reverse, and the monitor will show an image only when it is getting a picture from the camera. (Note: The RED wire connects to the positive (+) of the reverse light & the BLACK wire connects to the ground (-) of the reverse light)

Troubleshooting Guide Page 2

9. What is the pass code for my Bluetooth monitor?

We have 3 codes that you should try:

- A. 0000
- B. 1234
- C. 8888

10. My system is supposed to be wireless, why are there so many wires in a wireless system?

A. The reason your system is called wireless is because there is NO WIRE between the monitor and the camera, both systems still need power/ground and a wireless module

11. Why are there NO holes or groves for my monitors dash mount stand?

A. Remove the plastic shell that is over your monitor, it might look like it's part of the monitor but it can pop off, when you pull on it you can see that it can be taken off

12. My 2.5-4.3" Monitor doesn't show anything but a black screen?

- A. Your camera isn't getting power
- B. The RCA cable is not plugged in to both sides correctly
- C. One or both of you wireless adaptors are not power up (check connections)

13. Why is there a Blue or Green wire, what do I do with it?

A. The Blue or Green Cable is an optional trigger wire for the monitor, if connected to reverse fuse (usually under your dash) the monitor will activate when you go in reverse

14. Do the transmitter boxes need to be protected from the weather?

A. No, they are weather proof, but we do recommend setting them up so that they won't dangle while you drive, this way you get a clearer image and they won't get damaged from bouncing around.

15. Why does my wireless system lose reception when I drive or when I turn on the vehicle?

- A. Try connecting the wireless adaptors to a different power source, there have been rare cases that power source caused interference
- B. Try extending the transmitter with an RCA cable so that its closer to the receiver (some areas have more interference than other so it needs that extra boost)

16. My wireless system gets lines or "no signal" in the display only when I start driving?

A. Make sure the wireless adaptors are fastened tightly to the vehicle and not bouncing around.
(Tip - use Velcro to fasten them to the vehicle, available at Tadibrothers.com or most stores)

17. How do I remove the grid lines from my camera?

A. To remove the gridlines, twist together the two wires that come out of the camera, only then, connect the power plug into the 12 volt of the vehicle or battery, then the lines will disappear.

18. How can I return my product?

A. All items must get an RMA from our service department, please call them for the RMA at 866-966-5550 X 2

